

ATTACHMENT A

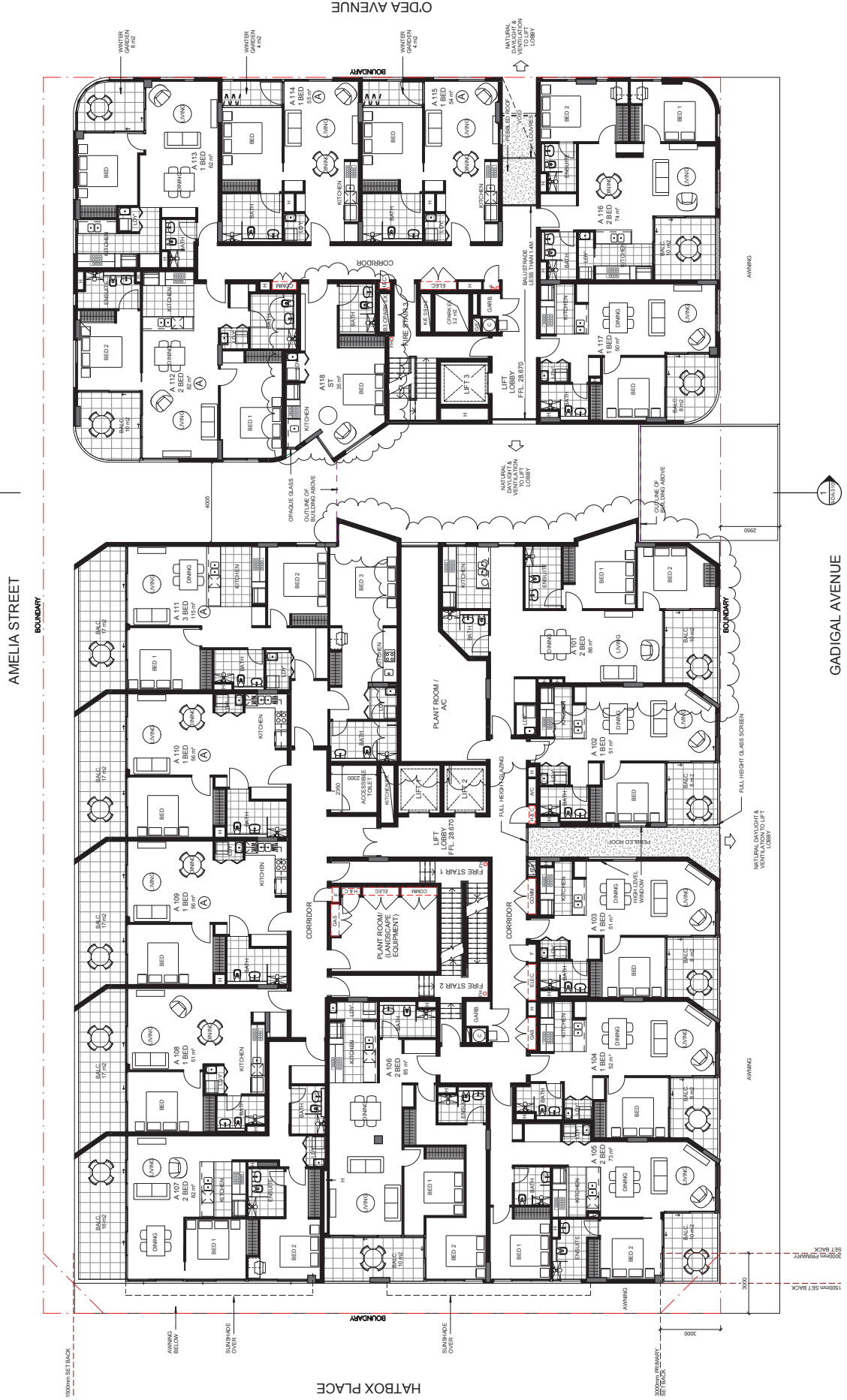
ATTACHMENT

**BUILDING B PLANS
D/2015/670**

52 O'DEA AVENUE WATERLOO

REV	DESCRIPTION	DATE
A	LAYOUTS AMENDED	26/10/15

ATTACHMENT A



1 LEVEL 01 PLAN
1:100

NOTE: LANDSCAPE INDICATIVE ONLY

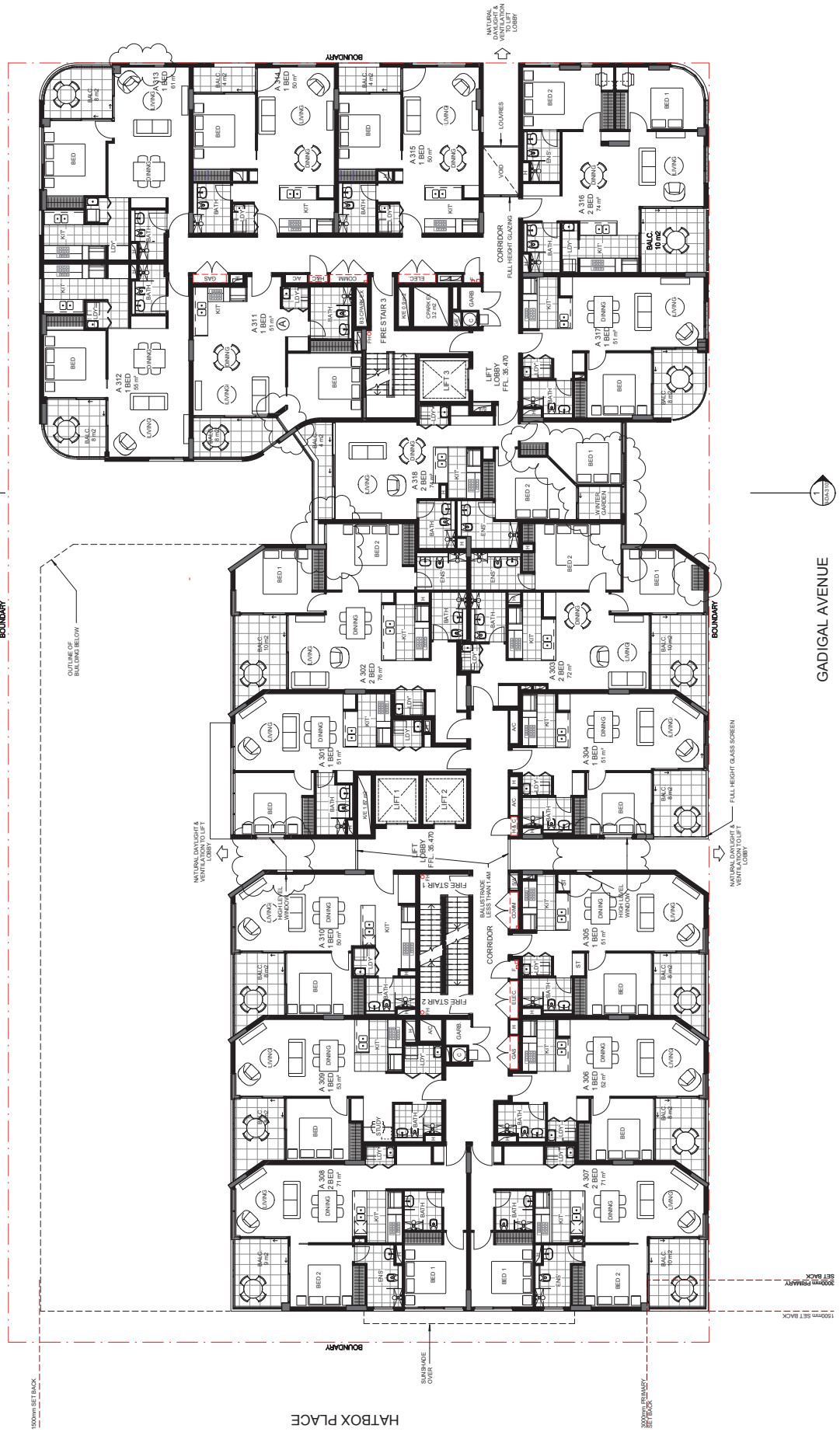
REV	DESCRIPTION	DATE
A	LAYOUTS AMENDED	26/10/15

ATTACHMENT A

O'DEA AVENUE

AMELIA STREET

GADGAL AVENUE



1 LEVEL 03 PLAN
1 : 100

REV	DESCRIPTION	DATE
A	LAYOUTS AMENDED	26/10/15

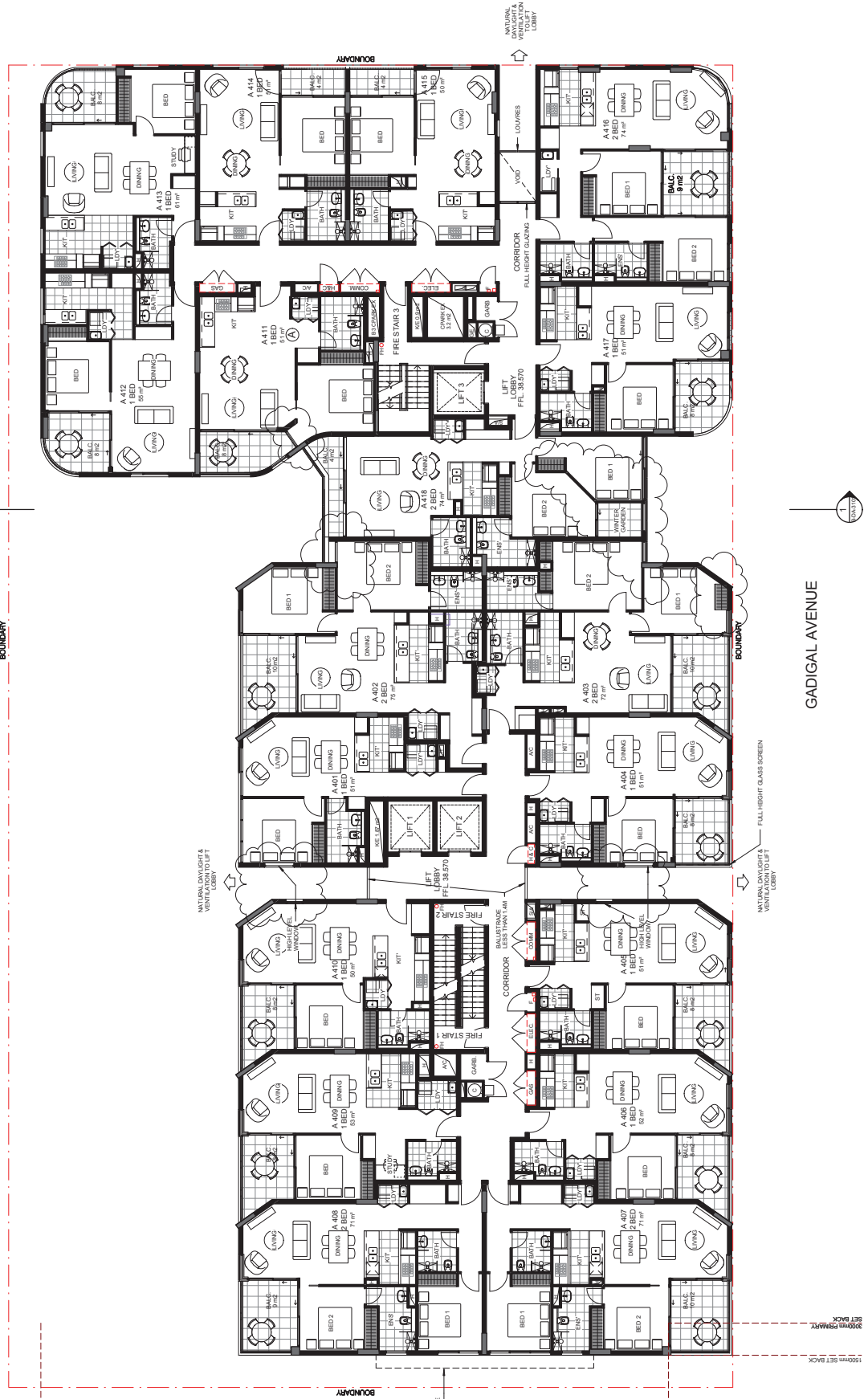
ATTACHMENT A

O'DEA AVENUE

AMELIA STREET

GADIGAL AVENUE

HATBOX PLACE



1 LEVEL 04 PLAN
1 : 100

REV	DESCRIPTION	DATE
A	LAYOUTS AMENDED	26/10/15

ATTACHMENT A

PTW ARCHITECTS
 Level 14, 52 O'Dea Avenue
 South Perth, Western Australia
 T +61 8 9437 3877
 F +61 8 9437 4139

MR. JAMES MURPHY
 PROJECT MANAGER
 1500mm SET BACK
 3000mm REARMY



DEVELOPMENT APPLICATION
 1:100 @ A1
 30/10/15 10:58 AM

1:100

B-DA-2108 LEVEL 05 PLAN
 REV: A

214036

26/10/15

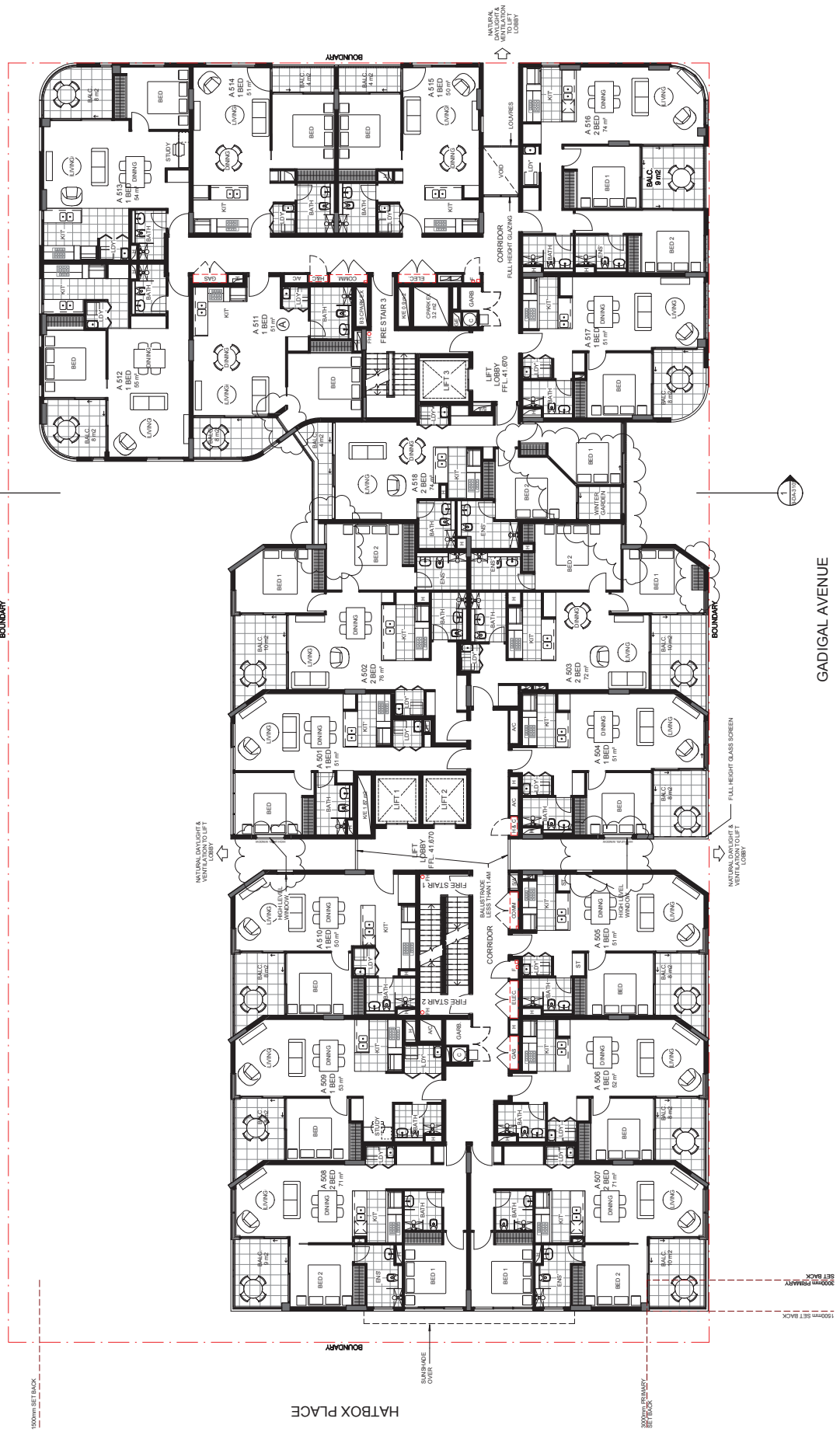
Level 05 Plan
 T +61 8 9437 3877
 F +61 8 9437 4139

Structural
 T +61 8 9437 3877
 F +61 8 9437 4139

Consultant
 T +61 8 9437 3877
 F +61 8 9437 4139



Client: 52 O'Dea Avenue - Building B
 52 O'Dea Avenue, Malpas, NSW 2017



AMELIA STREET

GADIGAL AVENUE

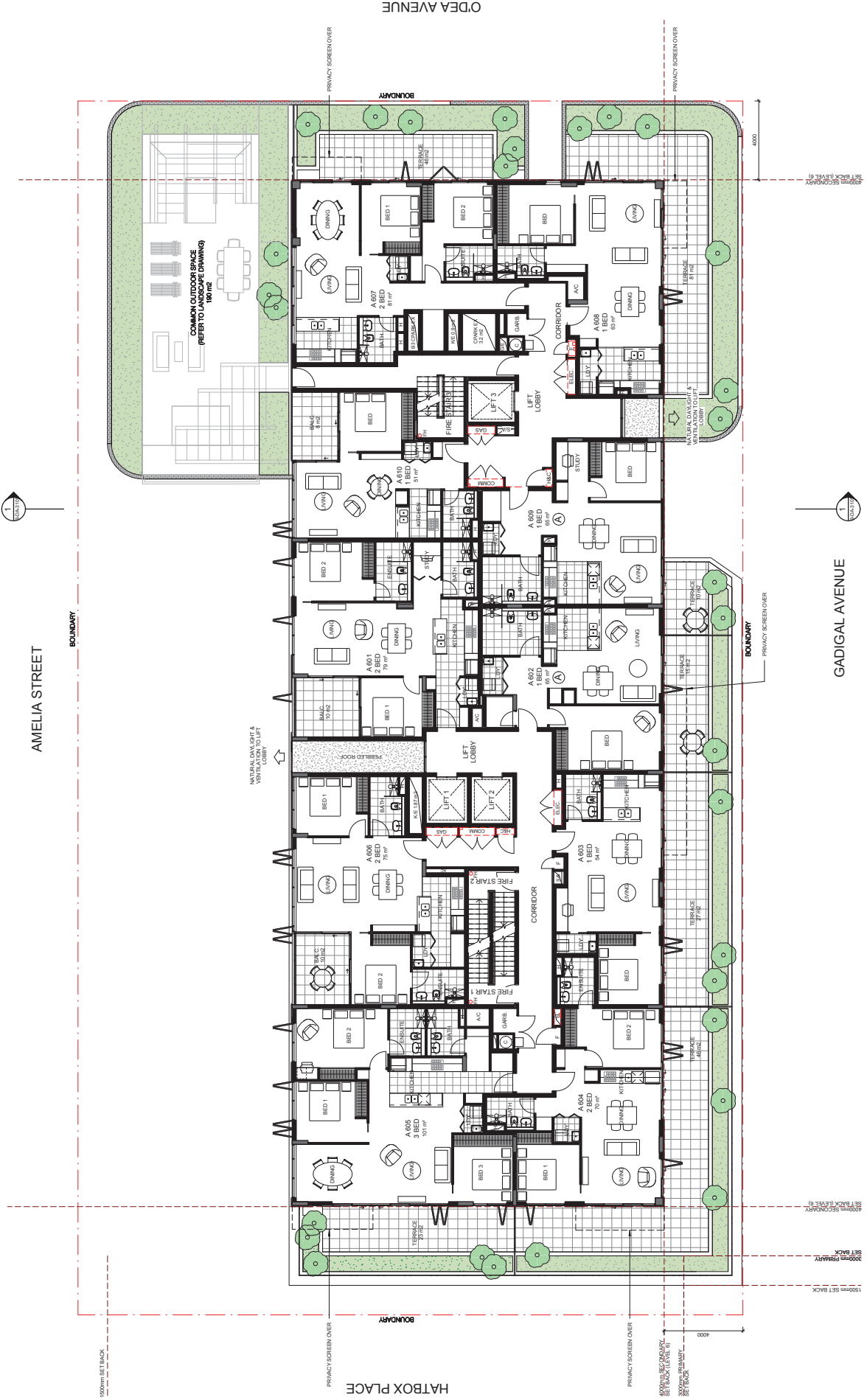
HATBOX PLACE

1500mm SET BACK

1:100

LEVEL 05 PLAN

ATTACHMENT A

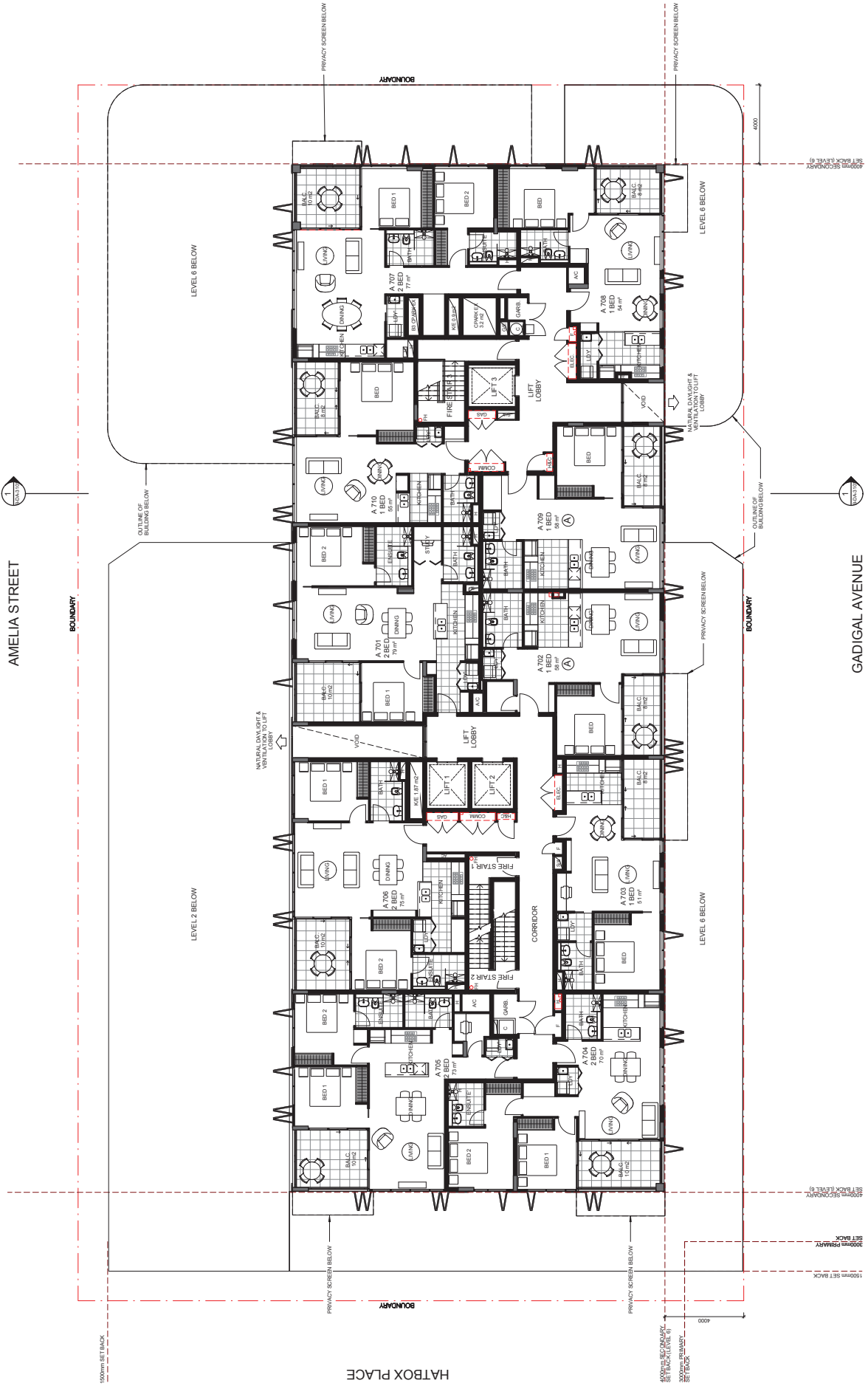


1 LEVEL 06 PLAN
1:100

NOTE: LANDSCAPE INDICATIVE ONLY

ATTACHMENT A

O'DEA AVENUE



AMELIA STREET

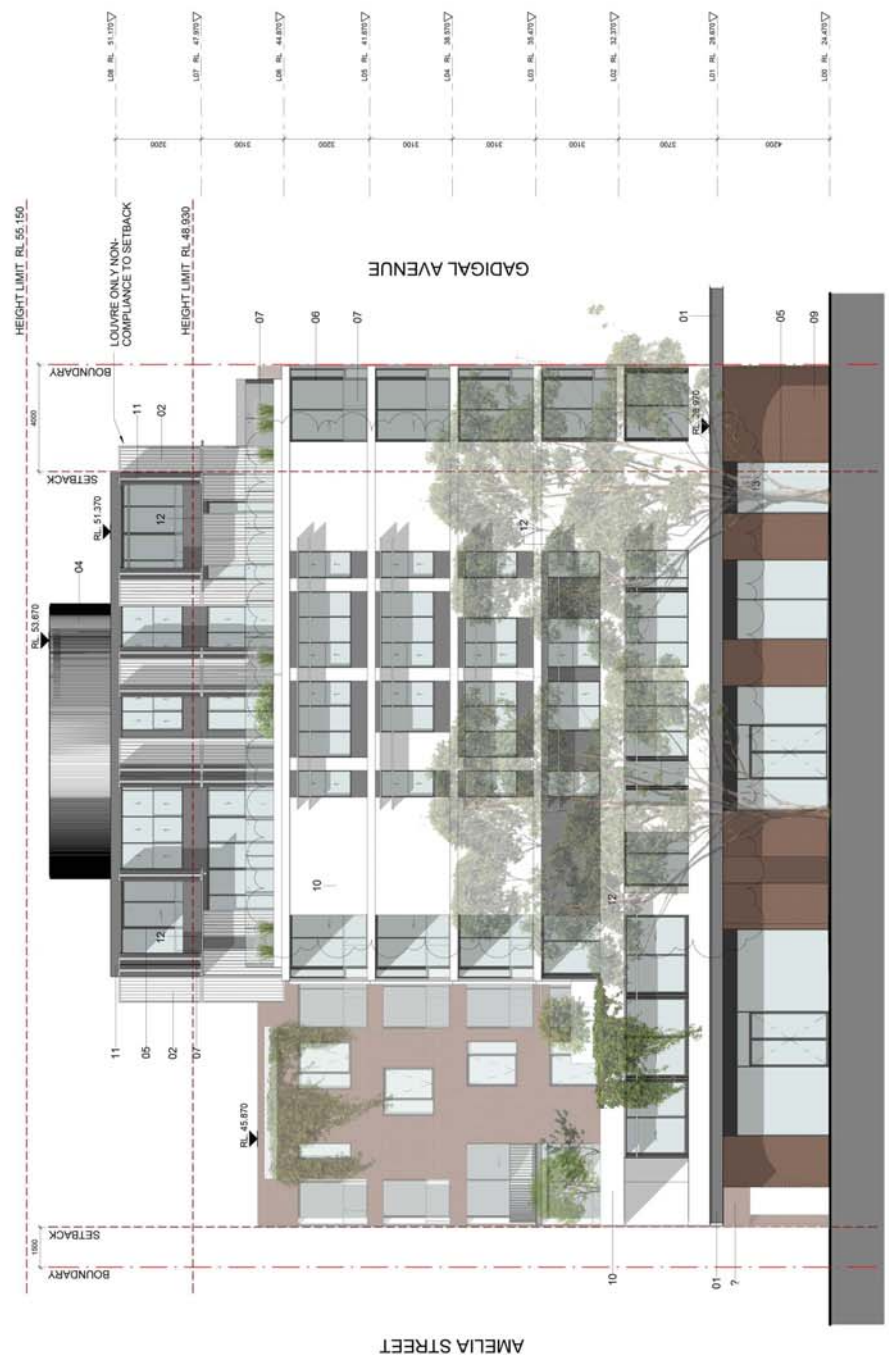
GADIGAL AVENUE

HATBOX PLACE

T LEVEL 07 PLAN
1 : 100

REV	DESCRIPTION	DATE
A	PAINT COLOUR ADJUSTED	26/10/15

ATTACHMENT A



1 North Elevation - Hatbox Place
1 : 100

Materials Legend

- 01 - Steel Channel
- 02 - Louvre - Powder Coated Aluminium
- 03 - Louvre - Powder Coated Aluminium
- 04 - Louvre - Powder Coated Aluminium
- 05 - Window Frame - Powder Coated Aluminium
- 06 - Window Frame - Powder Coated Aluminium
- 07 - Balustrade Glazing
- 08 - Steel Balustrade
- 09 - Brick - Exposed Face
- 10 - Brick - Paint Finish - Light
- 11 - Brick - Paint Finish - Dark
- 12 - Sun Shade
- 13 - Aluminium Cladding - Dark

REV	DESCRIPTION	DATE
A	WINDOWS ADDED	26/10/15

ATTACHMENT A



1 South Elevation - O'Dea Avenue
1:100

Materials Legend

- 01 - Steel Channel
- 02 - Louvre - Powder Coated Aluminium
- 03 - Louvre - Powder Coated Aluminium
- 04 - Louvre - Powder Coated Aluminium
- 05 - Window Frame - Powder Coated Aluminium
- 06 - Window Frame - Powder Coated Aluminium
- 07 - Balustrade Glazing
- 08 - Steel Balustrade
- 09 - Brick - Exposed Face
- 10 - Render - Light Finish - Light
- 11 - Render - Light Finish - Dark
- 12 - Sun Shade
- 13 - Aluminium Cladding - Dark

REV	DESCRIPTION	DATE
A	WINDOW ADDED IN ENTRY VOID	26/10/15



1 East Elevation - Amelia Street.
1 : 100

ATTACHMENT A

Materials Legend	
01 - Steel Channel	
02 - Louvre - Powder Coated Aluminium	
03 - Louvre - Powder Coated Aluminium	
04 - Louvre - Powder Coated Aluminium	
05 - Window Frame - Powder Coated Aluminium	
06 - Window Frame - Powder Coated Aluminium	
07 - Balustrade Glazing	
08 - Steel Balustrade Face	
09 - Steel Balustrade Face	
10 - Render - Paint Finish - Light	
11 - Render - Paint Finish - Dark	
12 - Sun Shade	
13 - Aluminium Cladding - Dark	